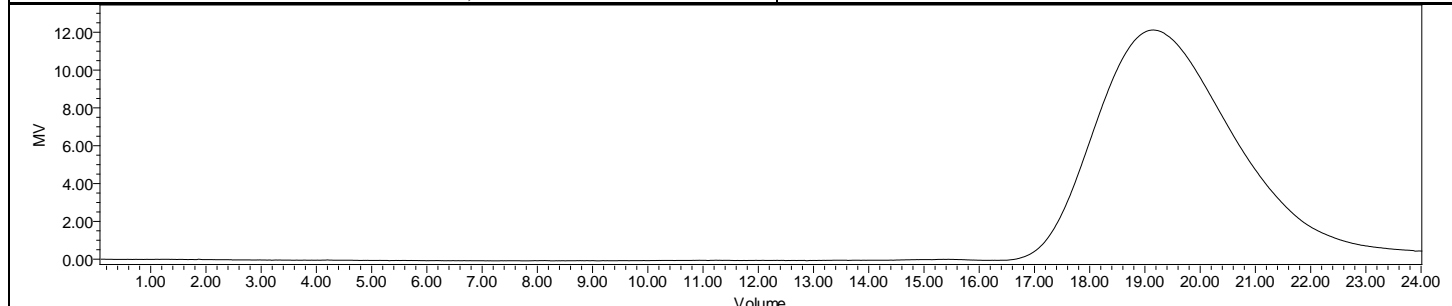
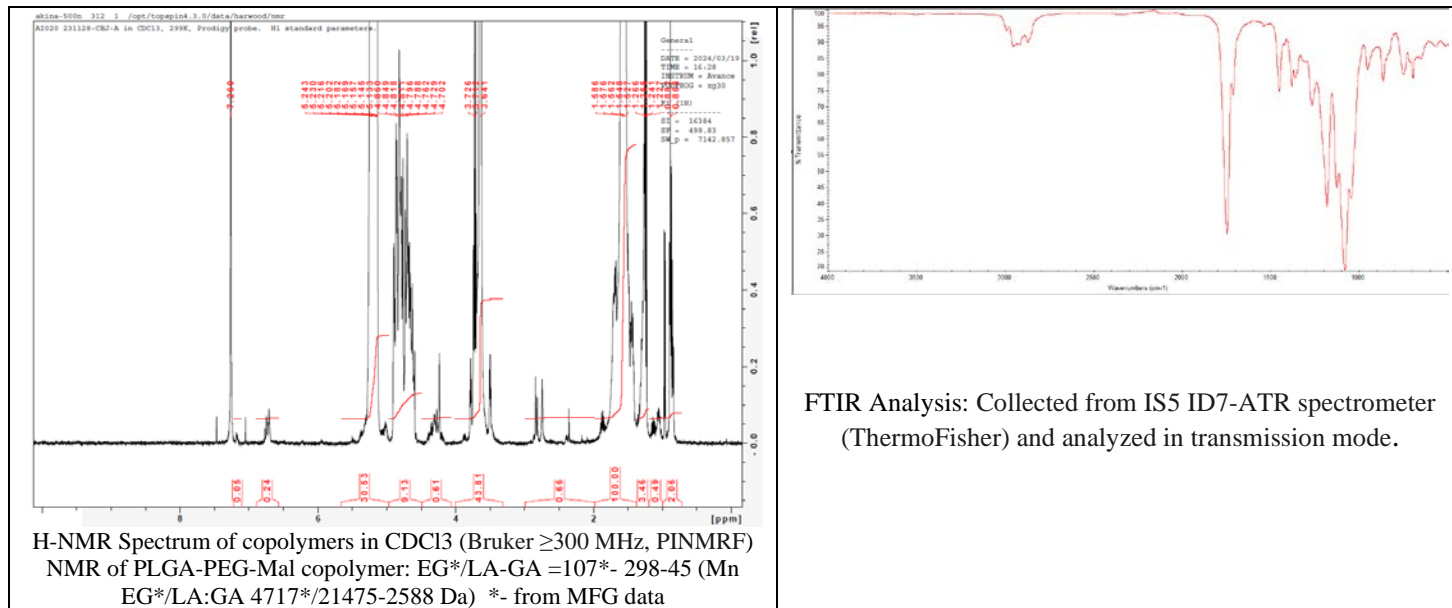


# No. AI261

# Certificate of Analysis



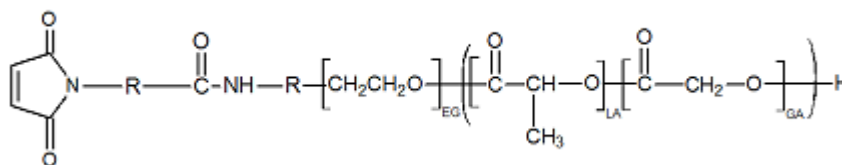
Product Name: Poly(lactic-co-glycolic)-b-Poly(ethylene glycol)-Maleimide Copolymers LA:GA 90:10 ( $M_w \sim 20,000-5,000Da$ ) (Lot#: 231128CEJ-A)



| Polymer        | $M_n$ (from GPC) | $M_w$ (from GPC) | PDI  |
|----------------|------------------|------------------|------|
| PLGA-PEG-Mal   | 27,278           | 46,882           | 1.72 |
| PEG-Precursor* | $M_n$ 4700       |                  |      |

\*- from MFG data

## Structure of PLGA-PEG-Mal



Approved By:  
*Amie Tyler*  
Quality Manager